

U.S. Route 202 Redesignation

When the Route 202 Parkway opens in fall 2012, it will be designated as U.S. 202. As shown on the U.S. 202 redesignation overview map below, the existing streets designated today as U.S. 202 between Route 63 and Route 611 will revert back to their local street names. In addition, the location where the Parkway ties into Route 611 will become the "U.S. 202/PA 611 Interchange", and the Route 611 exit at State Street will be signed the "State Street Interchange".

PennDOT plans to change local road signs where necessary prior to the Parkway's opening. PennDOT is also updating its maps ahead of the opening so GPS units and Web-based mapping sites carry correct road names.

Over the next year, more information about the Route 202 redesignation will be made available to help businesses, residents, schools, emergency services and others adjust to the new road names.



Construction Schedules

Construction of the three Parkway sections, is being performed in stages with completion scheduled for late summer/early fall 2012. The adjacent roadway improvement projects (Route 202 Section 65N, Route 463 (Horsham Road) and County Line Road) are being built simultaneously with the Parkway.

| | Construction Schedule | |
|---|-------------------------|-------------------------|
| | 2011 | 2012 |
| | J F M A M J J A S O N D | J F M A M J J A S O N D |
| Route 202 - Section 701 Welsh Road to Horsham Road | Completed | |
| Route 202 - Section 711 Horsham Road to Pickertown Road | | |
| Route 202 - Section 721 Pickertown Road to Route 611 | | |
| Route 202 - Section 7WM Wetland Mitigation - Kansas Road & County Line Road | Completed | |
| Route 202 - Section 65N Hancock Road to Welsh Road | | |
| Horsham Road - Section MW1 North Wales Rd to General Hancock Blvd | Completed | |
| County Line Road - Section WD1* Existing Route 202 to Stump Road | | |

* The intersection of County Line Road and Route 202 will be completed prior to the Parkway opening.



Your input is important! If you have comments concerning the construction of the Route 202 Parkway project please contact:

Bernie Rohe, P.E.
Construction Manager
Hill International

Mailing Address:
418 Stump Road, Suite 101
Montgomeryville, PA 18936

Phone & Email:
267-613-8220
bernardrohe@hillint.com



Tom Corbett - Governor
Barry J. Schoch, P.E. - Secretary of Transportation

Construction of the new U.S. Route 202 Parkway is advancing in Montgomery and Bucks counties as the roadway's nine-mile-long footprint is clearly defined, several major structures are in place, and improvements are being made to a number of local roads approaching the Parkway. Work on the Parkway's southern section (Section 701) wrapped up in late 2010 and a short section of the Parkway south of Route 463 (Horsham Road) was opened to traffic. Construction crews are continuing to build the central (Section 711) and northern (Section 721) sections of the Parkway as the project moves toward its completion in fall 2012. The following is a progress report and look ahead for each of the Parkway's construction sections.

Section 701

Construction is completed on the Parkway's mainline between Route 63 (Welsh Road) and Route 463 (Horsham Road), including improvements at the Knapp Road intersection, an interchange and bridge at Route 309 (Bethlehem Pike) and several access points along the commercial and residential areas north of Bethlehem Pike. Landscaping will continue throughout this year.

Section 711

Construction continues to build the Parkway between Route 463 (Horsham Road) and Pickertown Road, which includes two stream crossings between Route 463 (Horsham Road) and County Line Road. Most of the excavation has been completed and nearly all of the storm water drainage system is in place. The bridge over Mill Creek, located just north of the permanently closed Detweiler Road (where cul-de-sacs will be built), is finished.

South of Pickertown Road, crews are set to begin mainline paving this summer. Widening is ongoing along Route 152 (Limekiln Pike) between Stump Road and Upper State Road. Upper State Road also is being widened for a quarter-mile on both sides of the intersection with Route 152 (Limekiln Pike). From Route 152 (Limekiln Pike) to Pickertown Road, berms and storm water basins are in place on the east side of the Parkway. Bulk excavation, including blasting to loosen rock, will resume this fall.

Section 721

Construction is well underway between Pickertown Road and Route 611, where workers are setting steel and preparing to pour the concrete deck for the bridge over the Neshaminy Creek, excavating rock and building earthen berms. Crews widened Bristol Road between Upper State and Stump roads at the approaches to the Parkway, and continue to build the trail head parking area on the west side of Bristol Road.

Crews are building the Parkway bridge over Almshouse Road. In addition, a pre-cast arch culvert is in place over a branch of the Neshaminy Creek south of Almshouse Road, and excavation is underway for four decorative retaining walls adjacent to this structure.

Construction continues on four retaining walls adjacent to a small Parkway bridge just north of Lower State Road. Beams are in place on the bridge and deck construction is set to begin.

The Parkway bridge over New Britain Road is finished and the Wells Road overpass remains under construction through the summer. Bulk excavation is nearly completed between Almshouse Road and Route 611, and crews are building the new ramps to connect the Parkway and Route 611.



Stay connected for the latest project news and information!



Snap a picture of the code with your smart phone to access the project website:
www.us202-700.com



Follow us on Twitter
[@202Parkway](http://www.twitter.com)

Section 65N

With utility crews moving their poles to the edge of the right-of-way, PennDOT and its contractor are working to complete the widening and reconstruction of Route 202 (DeKalb Pike) and Route 63 (Welsh Road) in time for the Parkway opening in fall 2012.

The construction to widen the east side of Route 202 (DeKalb Pike) and the north side of Route 63 (Welsh Road) is expected to finish this fall. The contractor will then shift traffic onto the newly widened sections and begin rebuilding the opposite side of each road. The widening and related improvements are designed to enhance traffic flow to and from the Parkway.

In the interim, construction crews will continue to install drainage components, curbing, sound walls and make other improvements at the southern end Parkway.



County Line Road



Utility crews are relocating poles along County Line Road east of Route 202 (Butler Avenue). Tree trimming and clearing has been completed on both the sides of County Line Road. Two buildings located within the new right-of-way near Upper State Road and Stump Road have been removed. The contractor has installed erosion and sedimentation controls. Excavation for the new roadway is underway and crews will work throughout the year to widen County Line Road.



Once utility companies complete their relocation work on the Montgomery County (south) side of the project near Manor Drive and Stump Road, the contractor will temporarily widen that side of County Line Road near these two locations so traffic can be shifted to that side and the permanent widening can begin on the Bucks County (north) side later this year.

Parkway and Other Local Detours

Various detours within the project area are still in effect as construction continues in Sections 711 and 721. Other projects in the area (unrelated to the Parkway) also may have detours in place. Below is a summary of current and upcoming detours. The latest information on the detours can be found at www.us202-700.com

Wells Road

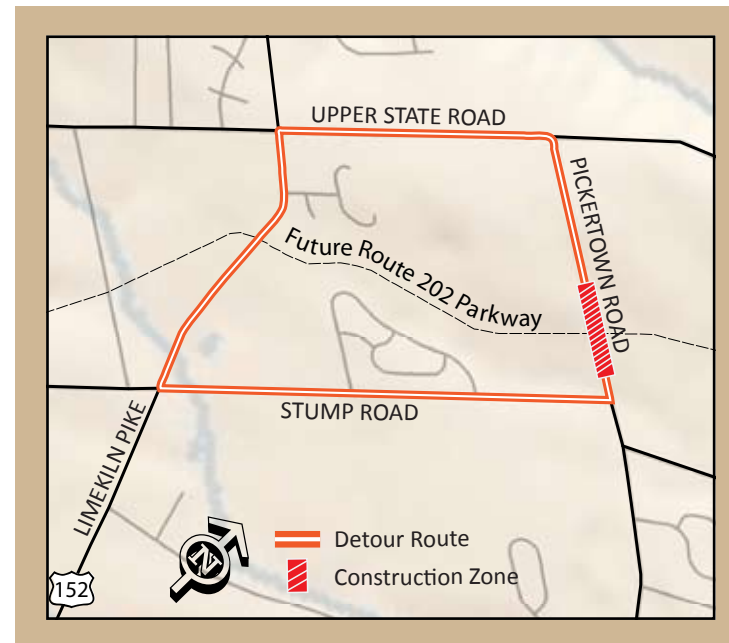
» Reopening in September 2011

Wells Road has been closed since June 2010 for the construction of the bridge over the Parkway.

Pickertown Road

» Detour Starting October 2011

A 12-month detour will go into effect in October 2011 for construction of the Pickertown Road bridge over the Parkway. During the road closure motorists will follow the posted detour which is highlighted in orange in the map below.



Lower State Road over Neshaminy Creek

» Detour Started April 2011

This bridge replacement project has northbound-only traffic detoured from April 2011 through May 2012. The project is unrelated to the construction of the Parkway.

Bristol Road and Route 202 (East Butler Avenue) Intersection

» Detour August 2011

The intersection of Bristol Road and Route 202 (East Butler Avenue) is scheduled to close one weekend for SEPTA rail crossing construction.

Neshaminy Creek Bridge Beams on the Move

In April, 12 large concrete bridge beams destined for the Parkway bridge over Neshaminy Creek were moved from the manufacturer in Cressona, Pa. through Doylestown Borough and Doylestown Township. The move took place over a two-week period. All beams were set in place by late April, allowing crews to begin forming the concrete deck.



USEFUL
INFORMATION



www.511PA.com
Pa.'s official travel information site provides reliable up-to-the-minute traffic, transit and weather information via telephone or Internet.



1-800-FIX-ROAD
Call PennDOT toll-free to report potholes, signing issues, brush/tree removal and other maintenance needs.



www.us202-700.com
Visit the project website for the latest project news, construction updates, detour information and progress photos.