

# FINAL DESIGN NOISE ANALYSIS

For

## US 202, Section 711 Parkway Alternative

Warrington Township

Pennsylvania Department of Transportation  
District 6-0

October 10, 2007 - NSAs 11 & 15

October 11, 2007 - NSAs 12, 13, 14 & 16



# US 202, Section 711

Montgomery and Bucks Counties, Pennsylvania

## Agenda

- **Open House / Plans Display**
- **Formal Presentation**
  - **Welcome and Introduction**
  - **Project Specifics**
  - **Analysis Results**
  - **Discussion per Noise Sensitive Area**
  - **Q & A**



# US 202, Section 711

Montgomery and Bucks Counties, Pennsylvania

## Welcome and Introductions

Purpose of meeting is to present and discuss findings of the final design noise analysis for 202 Parkway Section 711.

### Key Personnel

- Madeleine Fausto - PennDOT District 6-0
- John Kahil - McCormick Taylor
- Josh Wilson - McCormick Taylor
- Rob Kolmansberger - McCormick Taylor



# US 202, Section 711

Montgomery and Bucks Counties, Pennsylvania

## Project Description and Specifics

- **Section 711 limits from Horsham Rd. to Pickertown Rd.**
  - Two(2) 11' lanes w/ 5' shoulders
  - 12' shared use path
  - 5 bridges
  - At-grade intersections



# US 202, Section 711

Montgomery and Bucks Counties, Pennsylvania

## Goals of Project Design

- Apply context sensitive design solutions to reduce potential visual and sound impacts (landscaped plantings and earth berms)
- Maintain existing trees where practical
- Avoid and/or minimize wetland impacts
- Maintain reserved ROW corridor



# US 202, Section 711

Montgomery and Bucks Counties, Pennsylvania

## PennDOT Noise Abatement Criteria

### ■ Noise Abatement Criteria (NAC):

- Future noise levels approach or exceed 67 dBA
- Future noise levels increase by 10 dBA over existing noise levels



# US 202, Section 711

Montgomery and Bucks Counties, Pennsylvania

## Project Description and Specifics

### ■ Noise Levels Studied

- Existing Year 2006
- Future Year 2020



# US 202, Section 711

Montgomery and Bucks Counties, Pennsylvania

October 10, 2007

- **Focus area:**
  - **From County Line Rd. to Pickertown Rd. west of the proposed Parkway**
- **NSA 11 – St. John Neumann Cemetery**
- **NSA 15 – Whitehorne II / Whisper Ridge**

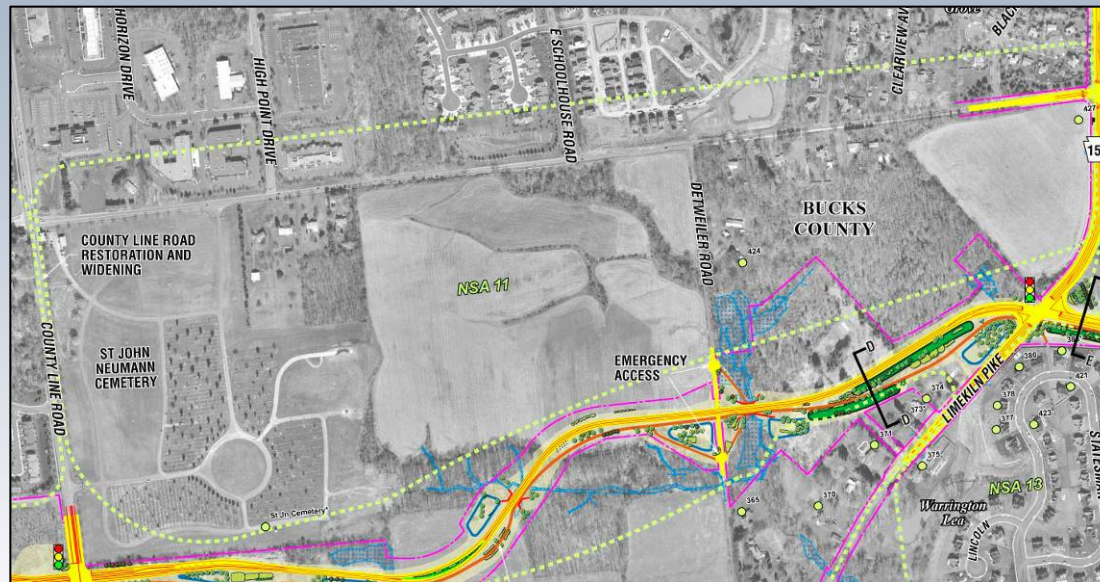


# US 202, Section 711

Montgomery and Bucks Counties, Pennsylvania

## Noise Analysis Results

### ■ NSA 11 – St. John Neumann Cemetery



Existing Noise Levels (45-63 dBA)

Future Noise Levels (47-64 dBA)

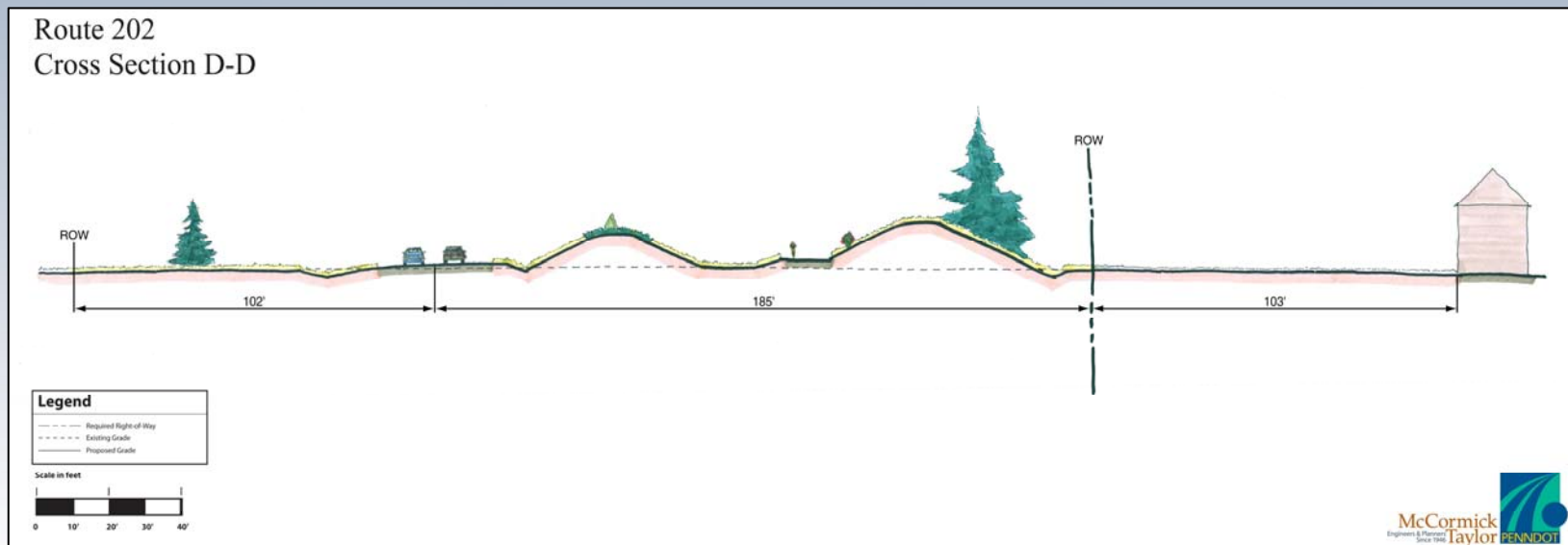


# US 202, Section 711

Montgomery and Bucks Counties, Pennsylvania

## Noise Analysis Results

### ■ NSA 11 – St. John Neumann Cemetery



# US 202, Section 711

Montgomery and Bucks Counties, Pennsylvania

## Noise Analysis Results

### ■ NSA 15 – Whitehorne II / Whisper Ridge



Existing Noise  
Levels (46-62 dBA)

Future Noise Levels  
(46-64 dBA)

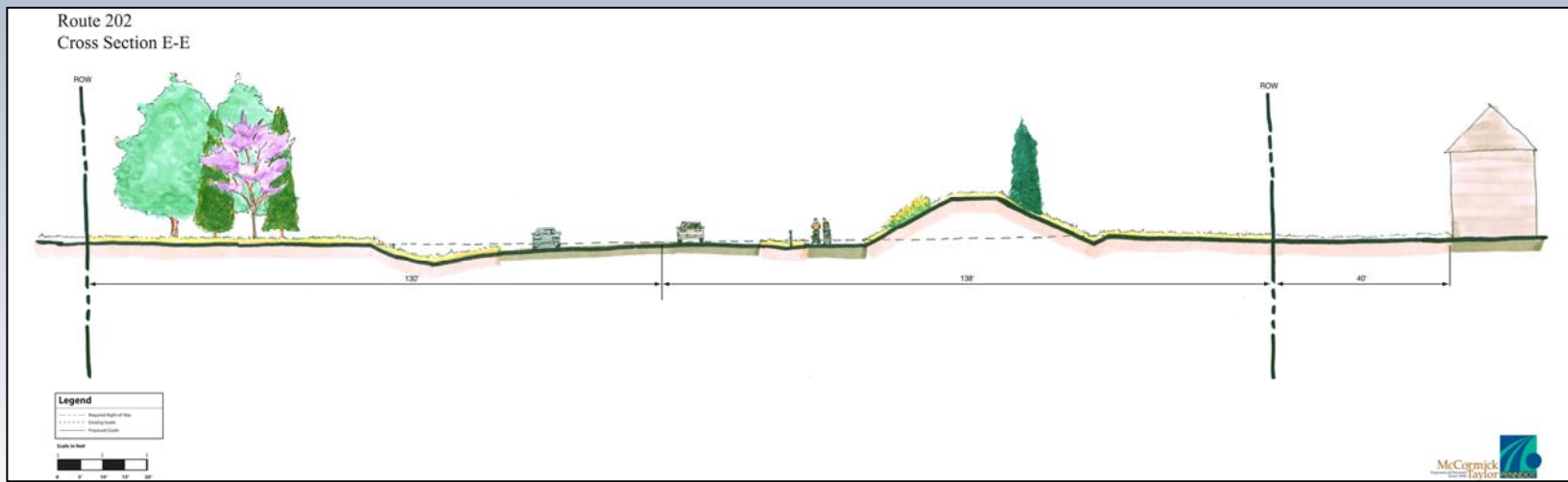


# US 202, Section 711

Montgomery and Bucks Counties, Pennsylvania

## Noise Analysis Results

### ■ NSA 15 – Whitehorne II / Whisper Ridge

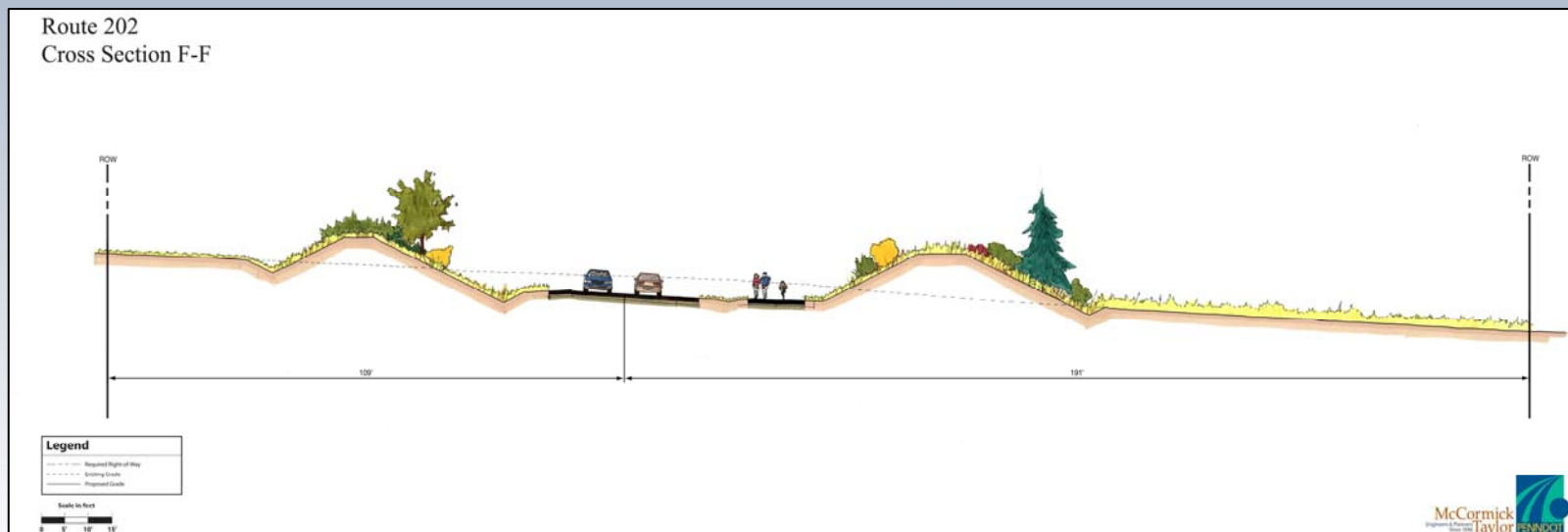


# US 202, Section 711

Montgomery and Bucks Counties, Pennsylvania

## Noise Analysis Results

### ■ NSA 15 – Whitehorne II / Whisper Ridge



# US 202, Section 711

Montgomery and Bucks Counties, Pennsylvania

October 11, 2007

- **Focus area:**
  - **From County Line Rd. to Pickertown Rd. east of the proposed Parkway**
- **NSA 12 – Stump Road and Limekiln Pike**
- **NSA 13 – Warrington Lea**
- **NSA 14 – Whitehorne I**
- **NSA 16 – Hickory Ridge**

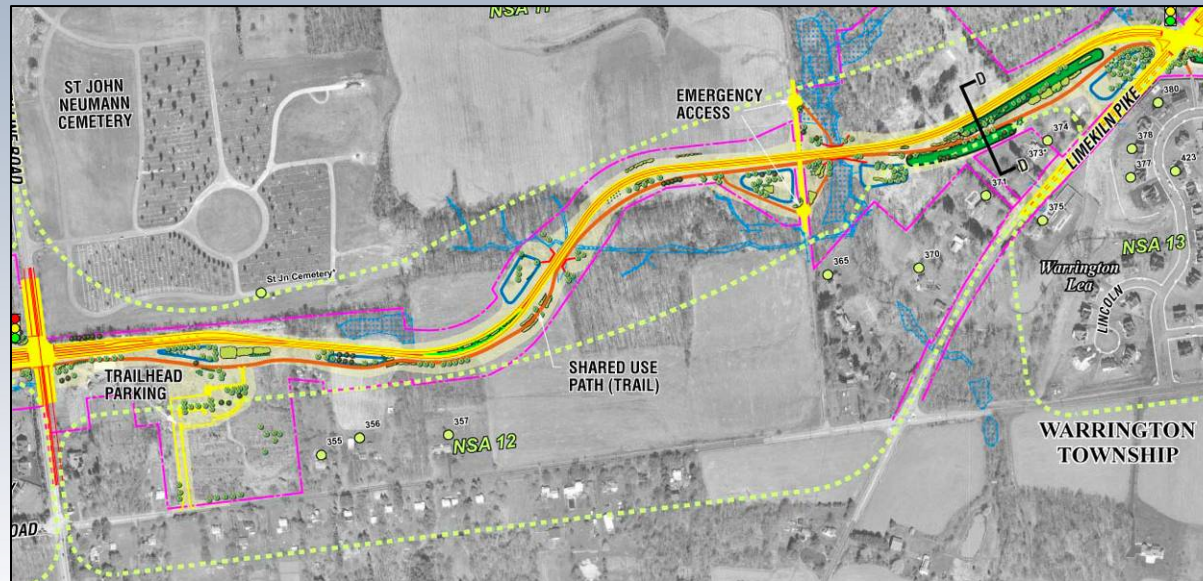


# US 202, Section 711

Montgomery and Bucks Counties, Pennsylvania

## Noise Analysis Results

### ■ NSA 12 – Stump Road and Limekiln Pike



Existing Noise Levels (48-59 dBA)

Future Noise Levels (51-61 dBA)





# US 202, Section 711

Montgomery and Bucks Counties, Pennsylvania

## Noise Analysis Results

- NSA 12 – Stump Road and Limekiln Pike



# US 202, Section 711

Montgomery and Bucks Counties, Pennsylvania

## Noise Analysis Results

### ■ NSA 13 – Warrington Lea



Existing Noise Levels (49-64 dBA)

Future Noise Levels (51-65 dBA)

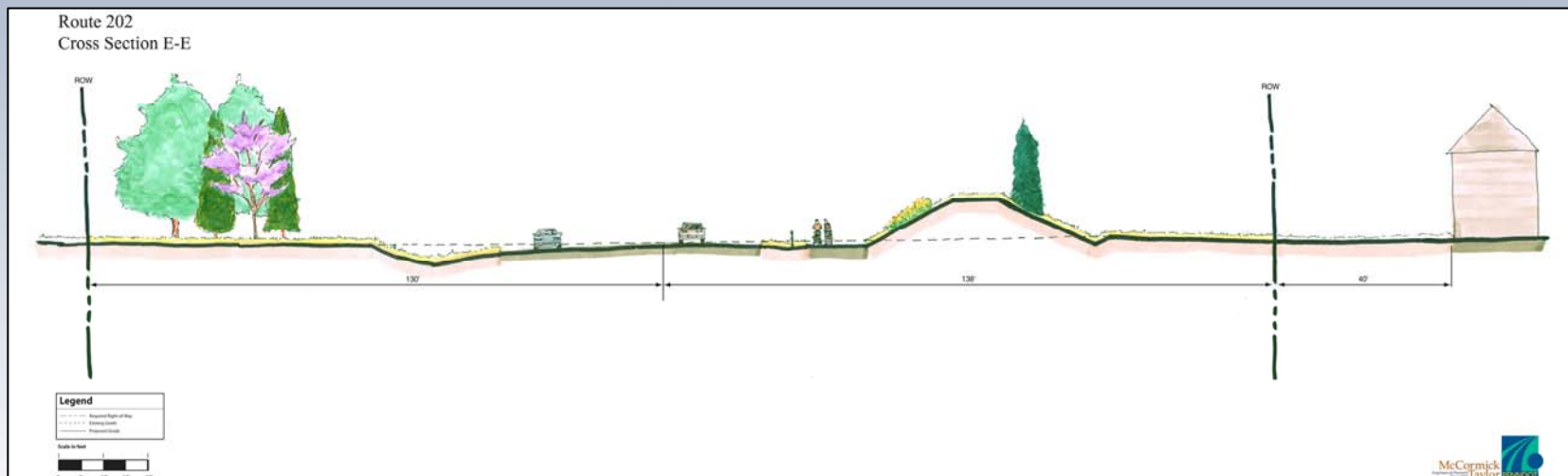


# US 202, Section 711

Montgomery and Bucks Counties, Pennsylvania

## Noise Analysis Results

### ■ NSA 13 – Warrington Lea



# US 202, Section 711

Montgomery and Bucks Counties, Pennsylvania

## Noise Analysis Results

### ■ NSA 14 – Whitehorse I



Existing Noise  
Levels (49 dBA)

Future Noise Levels  
(49-57 dBA)

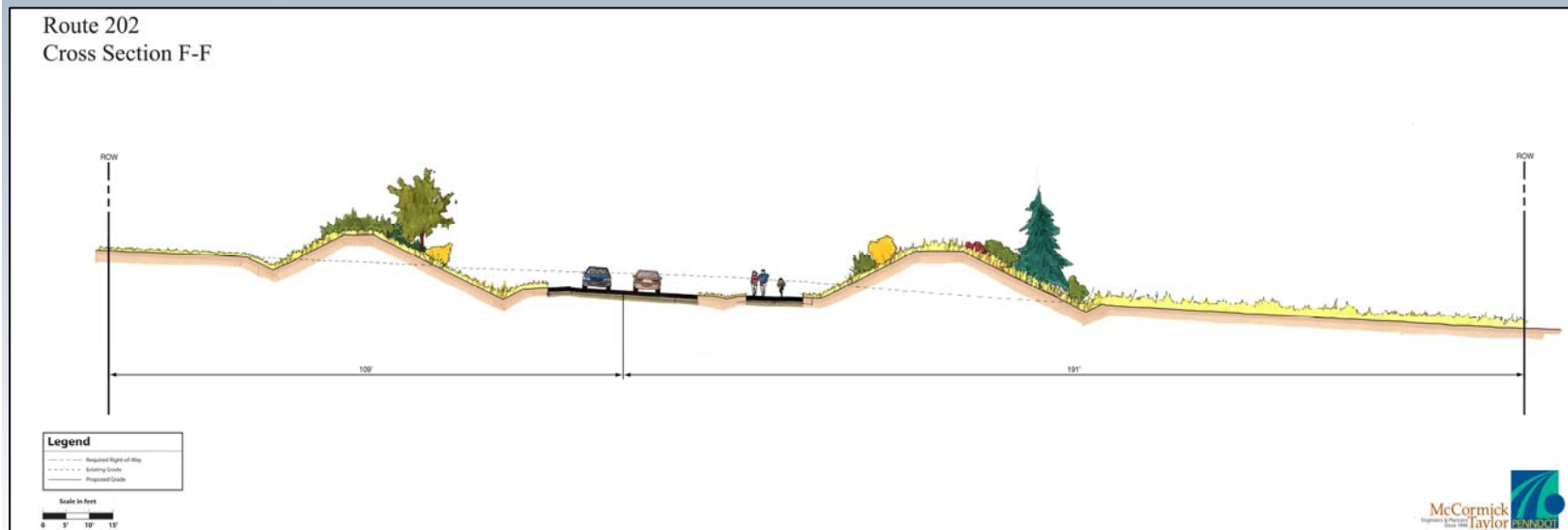


# US 202, Section 711

Montgomery and Bucks Counties, Pennsylvania

## Noise Analysis Results

### ■ NSA 14 – Whitehorse I

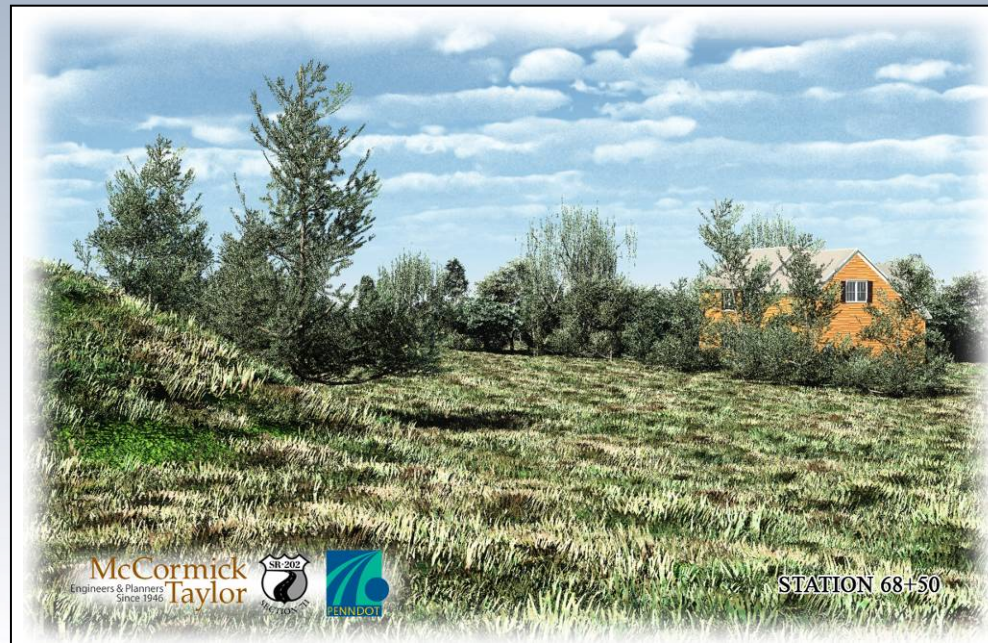


# US 202, Section 711

Montgomery and Bucks Counties, Pennsylvania

## Noise Analysis Results

- NSA 14 – Whitehorne I

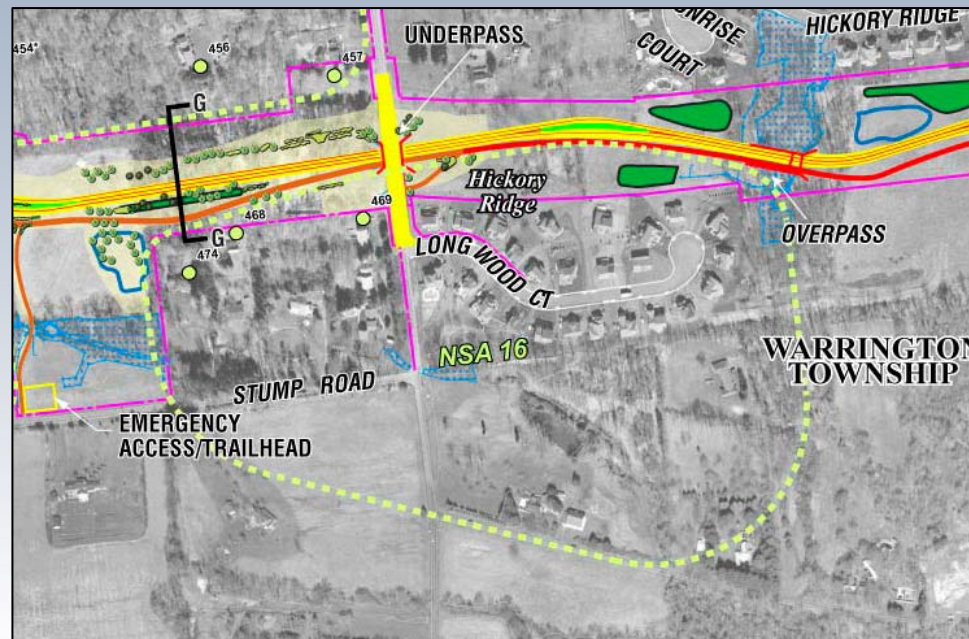


# US 202, Section 711

Montgomery and Bucks Counties, Pennsylvania

## Noise Analysis Results

### ■ NSA 16 – Hickory Ridge



Existing Noise Levels (44-51 dBA)

Future Noise Levels (47-53 dBA)

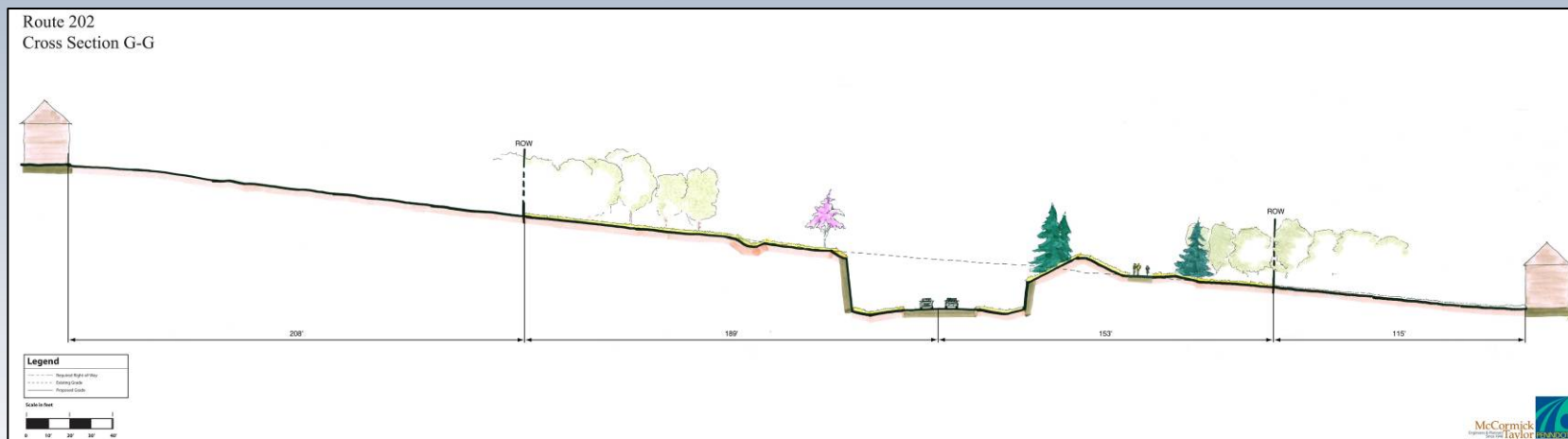


# US 202, Section 711

Montgomery and Bucks Counties, Pennsylvania

## Noise Analysis Results

### ■ NSA 16 – Hickory Ridge



# US 202, Section 711

Montgomery and Bucks Counties, Pennsylvania

## Noise Analysis Results

- NSA 16 – Hickory Ridge



# US 202, Section 711

Montgomery and Bucks Counties, Pennsylvania

## Conclusion

- The use of context sensitive design features (earth berms and the preservation of forested areas) provides noticeable visual and acoustic benefits
- Reduce forest clearing where practical
- Avoid and/or minimize encroachment to wetlands
- Maximize best visual shielding methods



THANK YOU

US 202, Section 711  
Parkway Alternative

Q & A

